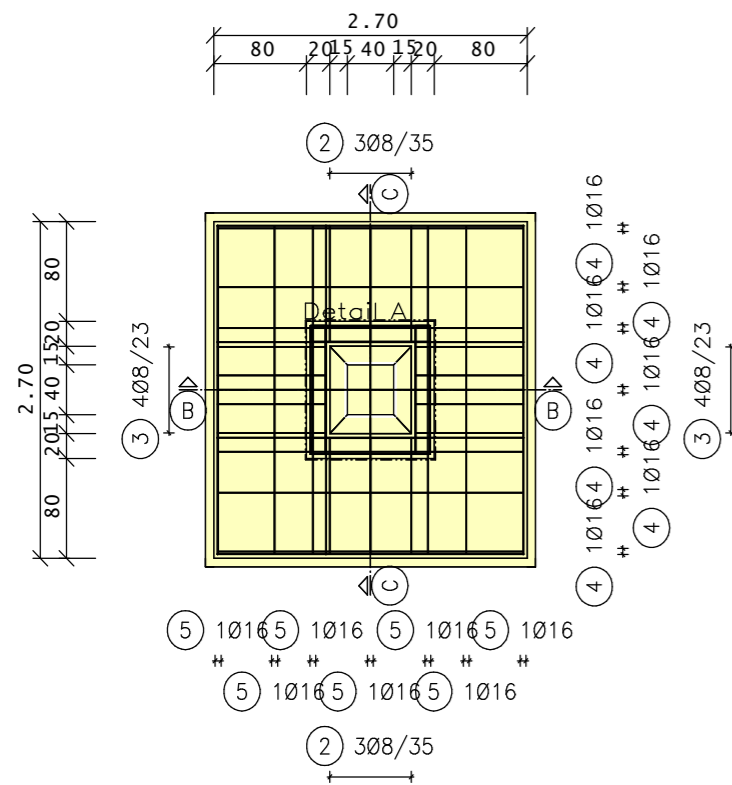
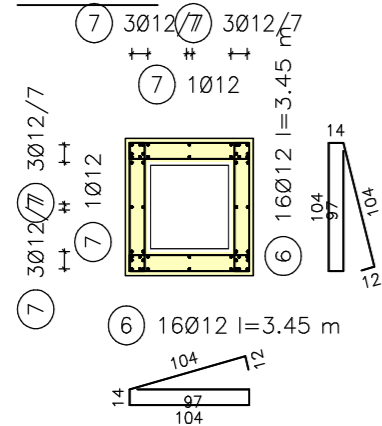


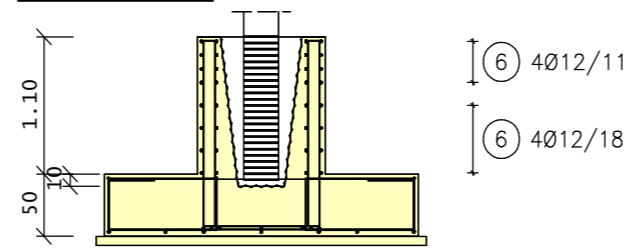
Pos. B537 Einzel/Köcherfundament DIN 1045-1



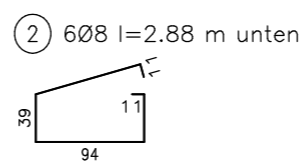
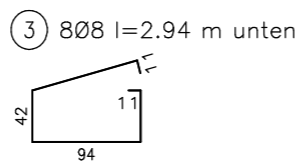
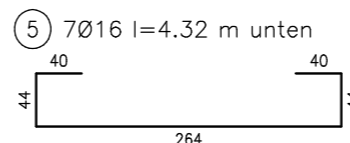
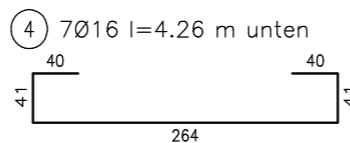
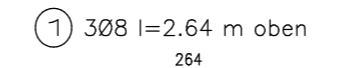
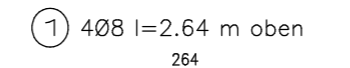
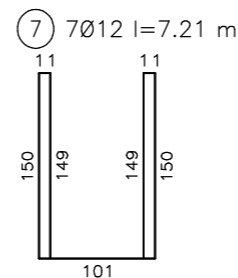
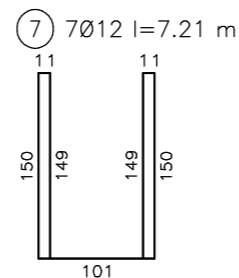
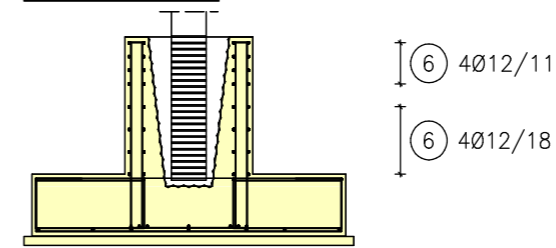
Detail A



Schnitt B-B



Schnitt C-C



Pos	Anz	ds	Rundstahl	Länge	Ges. L	Ges. Gew	
		mm	Typ	Bst	[m]	[kg]	
1	7	8	A1	A	2.64	18.48	7.30
2	6	8	B2	A	2.88	17.28	6.83
3	8	8	B2	A	2.94	23.52	9.29
4	7	16	A4	A	4.26	29.82	47.12
5	7	16	A4	A	4.32	30.24	47.78
6	32	12	B4	A	3.45	110.40	98.04
7	14	12	A4	A	7.21	100.94	89.63
Gesamtgewicht							305.99

Mindestwerte der Biegerollendurchmesser d_{br} (nach DIN 1045-1, Tab.23) (Bei Leichtbeton sind die Werte um 30 % zu vergrößern.)				
Haken, Winkelhaken, Schlaufen		Schrägstäbe oder andere gebogene Stäbe		
Stabdurchmesser d_s (mm)		Mindestwerte der Betondeckung rechtwinklig zur Biegebene		
< 20	≥ 20	> 100 mm > 7 d_s	> 50 mm > 3 d_s	≤ 50 mm ≤ 3 d_s
4 d_s	7 d_s	10 d_s	15 d_s	20 d_s

Projekt		
Beispiele für Ing+ Version 2007		
Planinhalt		
Pos. B537 Einzel/Köcherfundament DIN 1045-1		
Bearb.:	Gez.:	Gepr.:
mb	mb	
Datum:	Maßstab:	Plan Nr.:
09.08.07	1 : 45	1